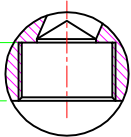
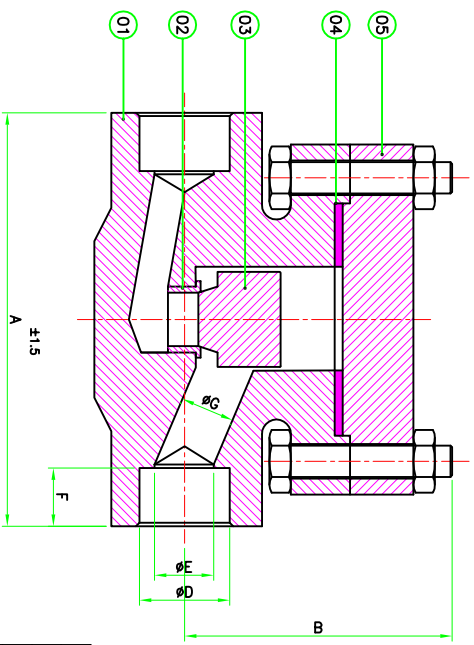


AMTECH

(WE RESERVE THE RIGHT TO CHANGE DESIGN AND TECHNICAL DATA FURNISHED HERE DUE TO CONTINUOUS PRODUCT DEVELOPMENT.)



SCREW END CONNECTION



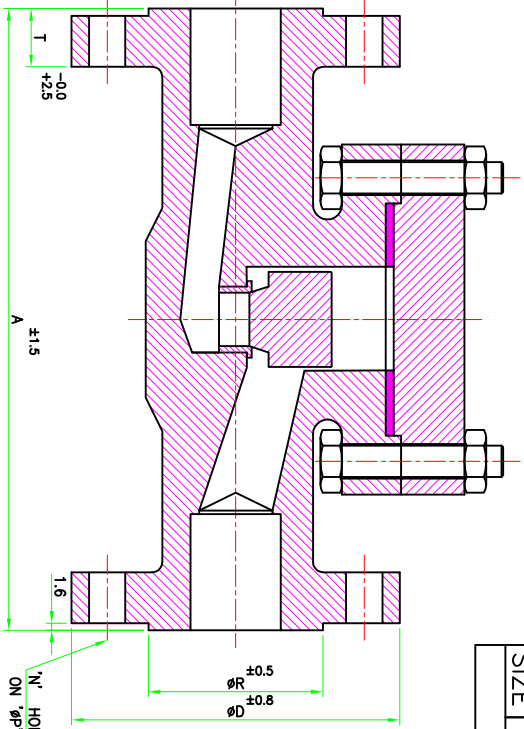
SIZE	A	B	C	E	F	G	H
50	144	110	19.5	61.0	50	16	35.0
40	140	95	18.5	48.5	40	15	29.5
25	106	67	14.0	27.0	20	13	12.0
20	95	67	14.0	22.0	20	13	12.0
15	87	61	13.5	22.0	15	10	9.0

TECHNICAL DATA

MFG. STD. :- BS 5352
 INSP. STD. :- API 598 / BS 6755
 SOCKET WELD AND THREADED TO : ANSI B 16.11 / ANSI B 2.1
 ENDS : FLANGE END AS PER B 16.5 RF/BS 1560
 END TO END : AS PER B 16.10

PRESSURE TEST (HYDRAULIC):-

SIZE	150#	300#
BODY :-	32 KG/CM2 (g)	80 KG/CM2 (g)
SEAT :-	22 KG/CM2 (g)	58 KG/CM2 (g)
SEAT (PNEUMATIC) :-	7 KG/CM2 (g)	7 KG/CM2 (g)
BODY :-	211 KG/CM2 (g)	
SEAT :-	141 KG/CM2 (g)	
SEAT (PNEUMATIC) :-	7 KG/CM2 (g)	



SIZE	A	B	C	E	F	G	H
50	267	110	165	92	127	08	22.0
40	229	95	155	73	114	04	19
25	203	67	124	51	89	04	19
20	178	67	118	43	83	04	19
15	152	61	95	35	67	04	16

UNSPECIFIED TOLERANCE FOR MACHINED DIM.
 0-75 (75-300 B00-600) ABOVE 600
 ± 0.12 ± 0.4 ± 0.6 ± 0.75

ALL DIMENSIONS ARE IN M.M.
 UNLESS OTHERWISE SPECIFIED
 REMOVE SHARP CORNERS

MANUFACTURERS & EXPORTERS
M. KUMAR TECHNOCRATES
 SR/9, RAMBHA COMPLEX, ASHRAM ROAD,
 AMEYDABAD - 380 014 (GUJARAT) INDIA
 Phone:- 0091-79-27540287.
 Fax:- 0091-79-27545519.
 E-mail:- info@mktechnocrates.com
 Website:- http://www.mktechnocrates.com

NO	DESCRIPTION	QTY.	MATERIAL
1	BODY	1	A 105
			A 182 (F 304)
			A 182 (F 316)
2	SEAT RING	1	AISI 410
			AISI 304
			AISI 316
3	VALVE	1	AISI 410
			AISI 304
			AISI 316
4	GASKET	1	SPIRAL WOUND S.S. 304 + CAF FILLER
5	COVER	1	A 105
			A 182 (F 304)
			A 182 (F 316)

SIZE	A	B	ØD	R	P	N	ØO	T
50	203	110	152	92	121	04	19	16
40	165	95	127	73	98	04	16	14
25	137	67	108	51	79	04	16	13
20	118	67	98	43	70	04	16	11
15	108	61	89	35	60	04	16	11

SIZE	A	B	ØD	R	P	N	ØO	T
50	267	110	165	92	127	08	22	22.0
40	229	95	155	73	114	04	19	21.0
25	203	67	124	51	89	04	19	17.5
20	178	67	118	43	83	04	19	16.0
15	152	61	95	35	67	04	16	14.0

SIZE	A	B	ØD	R	P	N	ØO	T
50	267	110	165	92	127	08	22	22.0
40	229	95	155	73	114	04	19	21.0
25	203	67	124	51	89	04	19	17.5
20	178	67	118	43	83	04	19	16.0
15	152	61	95	35	67	04	16	14.0

SIZE	A	B	ØD	R	P	N	ØO	T
50	267	110	165	92	127	08	22	22.0
40	229	95	155	73	114	04	19	21.0
25	203	67	124	51	89	04	19	17.5
20	178	67	118	43	83	04	19	16.0
15	152	61	95	35	67	04	16	14.0

NO	DESCRIPTION	QTY.	MATERIAL
1	BODY	1	A 105
			A 182 (F 304)
			A 182 (F 316)
2	SEAT RING	1	AISI 410
			AISI 304
			AISI 316
3	VALVE	1	AISI 410
			AISI 304
			AISI 316
4	GASKET	1	SPIRAL WOUND S.S. 304 + CAF FILLER
5	COVER	1	A 105
			A 182 (F 304)
			A 182 (F 316)